

RUTGERS

New Jersey Agricultural
Experiment Station



4-H Summer Fun!

MORRIS COUNTY 4-H FAIR

July 18-21, 2019

Chubb Park, Chester NJ

Enter your projects at the Fair!

Youth who meet these criteria can enter:

- You live in Morris County
- You have completed Kindergarten
- You are not more than one year past high school

If so, we want to see your work at the Fair!



Projects can range from Arts & Crafts to Horticulture to Photography to Science to Woodworking & more!

- ***Enter your projects and we will display them at our Fair for all our fairgoers to view during the 4 days of our Fair***
- ***See the back of this flyer for detailed information on the many different projects you can enter***

4-H is a community of young people across America who are learning leadership, citizenship and life skills.

4-H is currently seeking caring adult volunteers interested in becoming 4-H leaders in a variety of project areas.



For more information about **Morris County 4-H**, please contact us --

<http://morris.njaes.rutgers.edu/4h>

973-285-8301

4hmorris@njaes.rutgers.edu



Here are some of the project areas that you can enter. Your entries can be projects you have made at home or in school.



Clothing and Textiles

This can be a garment or non-garment item.

Crafts

Items can include ceramics, fabric, yarn, crafts made from a kit, or your own design.

Fine Art

Paintings, drawings, sculptures, and other artwork are included in this category.

Food and Nutrition

Categories include displays, menus, and place settings, dairy foods, international foods, frozen foods, baked goods, canned foods, yeast breads and roll and other foods.

Horticulture

Categories include indoor potted plants, flowers, plant groupings, vegetables, arrangements, vegetable plants in pots, corsages, fruits and berries, and ornamentals.

Literary Work

Categories include poetry, fiction, non-fiction and song lyrics.

Models

This can include all types of model airplanes, rockets, cars, horses, etc.

Needlework

Categories include knitted item, crocheted item, needlepoint item, embroidery and counted cross stitch, crewel, appliqué, quilting, and rugs.

Photography

Pictures can be digital or film photography.

Poster Paws & Claws Contest

Create a poster all about your pet and why they are special to you! Pictures, drawing, poems, and stories are encouraged to tell others about your pet.

Sciences

Categories include forestry, conservation, entomology, marine science, biology/ecology, and earth science/physical science.

Woodworking

This can include all types of woodworking; own design or from a kit

Poultry Show

Chickens, turkeys, ducks, guinea fowl, doves, home-laid eggs

Rabbit and Small Animal Show

Rabbits, guinea pigs, hamsters, mice, rats, gerbils, ferrets, chinchillas

Herpetology Show

Lizards, snakes, frogs

Open Pet Show

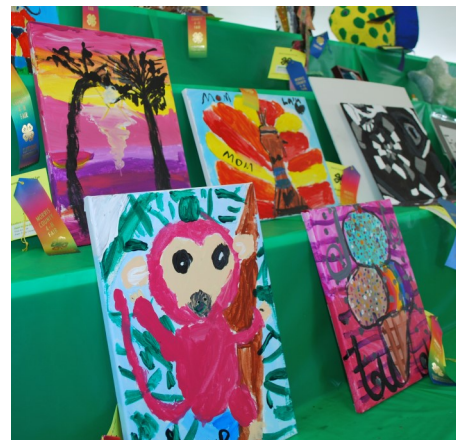
Come and show any animal you wish to bring to the Fair

Dress-A-Pet

Decorate your pet or its cage

Talent Show

Come and showcase your talent! Acts may consist of a single person or a group.



For detailed project entry information, see the 2019 4-H Fair Entry Book on the Morris County 4-H website: <http://morris.njaes.rutgers.edu/4h/Fair.html>

Cooperating Agencies: Rutgers, The State University of New Jersey, U.S. Department of Agriculture, and County Boards of Chosen Freeholders. Rutgers Cooperative Extension, a unit of the Rutgers New Jersey Agricultural Experiment Station, is an equal opportunity program provider and employer.

The 4-H Youth Development Program is part of Rutgers Cooperative Extension of Morris County. 4-H educational programs are offered to all youth, grades K-13, on an age appropriate basis, without regard to race, color, sex, national origin, or disability. If special accommodations are needed, please contact the 4-H office.